

ST. ANDREW'S

Lutheran Church

December 2020

A Light Shines in the Darkness

Outdoor Advent Worship

first and third Sundays in December, 10:30 a.m.

Bundle up and join us in the parking lot for Advent worship at 10:30 a.m. on December 6 and 20.

Indoor Advent Communion Worship

second and fourth Sundays in December (9:00 – 11:15 a.m.)

Please make reservations for these small services (limited to 8 or 25 participants) to be held on December 13 and 27.

Wednesdays at noon. Please make reservations for these small services (limited to 25 participants).

Advent Evening Prayer

Our usual Wednesday evening Advent Evensong will be posted each Wednesday in Advent, including beautiful music and different readings and messages each week from Pastor Trump and other preachers.

Christmas Eve, December 24

Service of Holy Communion and Candlelighting (outdoors) at 4 p.m.
No reservations needed.

Services of Holy Communion and Candlelighting (indoors) at 12 p.m., 6 p.m., 7 p.m. and 8 p.m. Please make reservations for these small services.

Virtual Christmas Eve worship, complete with Christmas hymns and "Night of Silence," will be posted that day.

Christmas Day, December 25

Services of Holy Communion (indoors) at 10:00 a.m. and 11:00 a.m.
Please make reservations for these small services.



*Masks and social distancing are required in all of our worship spaces, indoor and outdoor.
To make reservations, call the church office 803.772.6034 or go to salutheran.com*





CALLED CONGREGATIONAL MEETING

There will be a called congregational meeting on SUNDAY, DECEMBER 6th at 11:15 a.m. following the outdoor worship service, with a ZOOM option, to consider the following recommendation.

THE CONGREGATIONAL COUNCIL recommends the replacing of the HVAC units that supply air and heat to the two-story educational building, by Central Heating and Air at a cost of \$237,200. This includes a 10% contingency fee. Completion is expected by April 2021.

The SOCIAL HALL unit (still working) and the supplemental KITCHEN UNIT (not working) are not included.

FUNDING: Permission of all donors has been secured to use the NARTHEX/PARLOR FUND (\$121,727). The rest will come from the RESERVE FUND which presently has \$106,886 and has no restrictions. If the Reserve Fund does not cover the complete cost the small remaining amount would come from the Building Use Fund (\$15,000).

There will be a campaign in the future to reimburse the Narthex/Parlor fund.

Where would this leave us financially?

We would still have approximately \$130,000 in savings for unexpected expenses. As recently reported ATTENTION OF GIVING responses have been very strong for next year. If they are accurate, we should not need any savings to meet our expenses. Finally, by the end of 2021 we expect to be out of debt! Presently about \$3000 per month of your gifts go toward the debt retirement, and we hope this giving will be redirected to regular expenses. We are confident that once Covid is under control and we are back together in worship and fellowship we can have an appeal for the work that is necessary in the narthex, parlor, and sanctuary carpet as well as some other projects that you approve.

Please feel free to contact Curtis Amick, Pastor Trump, or members of council with any questions.

A Word from Pastor Trump

WORSHIP and COVID-19 DECISIONS



The Covid-19 Task Force continues to meet weekly to discuss the most recent data and help make decisions regarding worship and other gatherings in the church. Again, the task force looks at CDC and DHEC numbers. There are two doctors on the team who help sift through the data. The critical number is the percentage of positive tests. No matter how many people get tested, how many are positive? As of last week, the numbers for Richland and Lexington Counties were hovering around 13%. The hope is that once this number goes down closer to 5% the church can move to phase two and have worship inside with up to 50 people, still following all precautions.

The task force is aware that other churches reach different conclusions. People drive by places of worship and see cars in the parking lot. Granted, sometimes figuring out which guidelines are the best is like trying to nail Jell-O to the wall. The task force has guidelines from a variety of denominations as well. The Episcopal guidelines are very helpful because they try to take into account the size of the sanctuary. After studying them at length the task force did decide that we could safely offer worship with up to 25 in the sanctuary. However, the church is continuing to offer services for a maximum of 8 for those who are not comfortable with more. In the meantime, outdoor worship will continue on the 1st and the 3rd Sundays of every month, and recorded services will go out weekly.

Finally, we will offer Wednesday noon time services as well through Advent. Your continued generosity allows this church to continue to offer God's word of grace to all. It is needed today more than ever. Your gifts make the recorded services possible, as well as all other worship opportunities. Your gifts enable all the ministries of the church, including those that reach out to the less fortunate among us. As of the end of October, without the Covid-19 "loan/grant" we have received \$40,000 less than we spent. The church has spent a good deal less than was budgeted. At this point last year, we were \$15,000 in "the red." This was to be expected due to the disruption of the pandemic. If you are "behind" for the year simply due to the fact that life in the church is different, that maybe you are not here in person, and your financial situation has not changed, please consider helping close out this crazy year on a good note. Maybe we can make up all this difference? Any "extra" will help pay for needed repairs on the HVAC system! (A vote regarding that will be coming soon.) Again, thank you for your faithfulness.

NEW COMMUNION TIMES FOR DECEMBER

Please note that on December 6th and 27th, there are 2 indoor services with the maximum of 8 worshippers (9:00 a.m. and 10:30 a.m.) and 2 services with a maximum of 25 worshippers (9:45 a.m. and 11:15 a.m.). If you are comfortable attending in the larger group setting, please sign up for one of those services and leave the 9:00 a.m. and 10:30 a.m. services for those who have need for a limited group.

There are also communion services on Wednesdays at noon on December 2nd, 9th, 16th and 23rd, with a maximum of 25 worshippers

(Please remember to wear a mask in the building and stay at least 6 feet apart from those who are not in your family group.)



If you have any questions, please contact Deacon Sandra Holland at 803-269-9659.

Gathering Online Through Zoom

A new Zoom Schedule is sent out every Monday morning in an e-news. To access a Zoom meeting by video you will need to use a laptop computer, tablet, smartphone or a desktop computer that has a camera and microphone added.

You can also access the meeting by dialing in by phone (either mobile or land line). The phone number and Meeting ID is listed next to each event. Please enter the meeting ID when prompted.

If you have any other questions, please contact Sandra Holland at 803-269-9659 or sholland@salutheran.com who will be happy to help you get connected.

Regular Weekly Zoom Gatherings:

Sunday

Zoom into the Bible led by Trent Shealy and Pastor Trump. A time of sharing and exploring the Bible. Each week we examine the lessons for THAT SUNDAY, making your worship experience that much richer. Times will vary from week to week, so, please check the weekly Enews.

Children's Sunday School Classes - meeting on 2nd & 4th Sundays only

9:00 a.m.—Sunday School for Preschool—2nd Graders

9:45 a.m.—Sunday School for 3rd—6th Graders

Monday

6:00 p.m.—**Yoga** Vicky Henderson and Linda Anderson lead a weekly yoga class for all levels.

Tuesday

7:00 p.m.—**Yoda Rules** (December 1 & 29)

7:15 p.m.—**Pajama Time with Church Friends** (*Toddlers—6th graders*)

Zoom Bible Study with Pastor Trump

Wednesdays at 6:00 p.m.

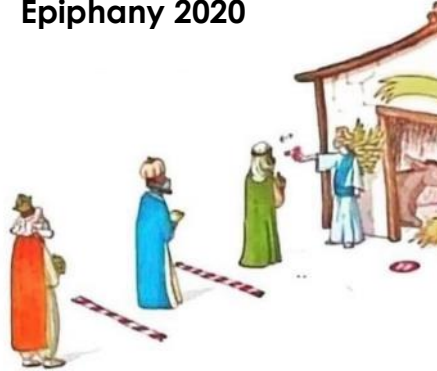
It is SO easy to join. Just go to the Zoom link that is emailed every week and click on it. You do NOT have to come every week and you can join any time. We are journeying through the powerful book of JEREMIAH. Join us! Invite others! There is room on the screen for as many as we would like.



EPIPHANY WORSHIP, January 6th, 12:00 Noon

We will be having a communion worship service for Epiphany. Please join us. We do ask that people sign up in advance if at all possible.

Epiphany 2020



Donations for Virginia Wingard Food Pantry

The Food Pantry at Virginia Wingard is open. They are taking bags to cars instead of having people come in the building. The food pantry's hours are Tuesday, Wednesday, Thursday 1-3 p.m. and they serve people in 29201, 29203 and 29210 area codes. You have to show an ID to receive food. If you would like to donate food, please take food directly to Virginia Wingard and call 772-0794 before you go to make sure someone will be there.

Items needed for the month of December

- 14 to 16 oz. jar of peanut butter
- Medium box of noodles
- 1 lb. box of rice
- Dry cereal (box or bag)
- Large can of spaghetti sauce



They are also taking monetary donations. Mail your checks to Virginia Wingard UMC, 1500 Broad River Rd, Columbia, SC 29210, and put "food pantry" in the memo line.



Youth Schedule (7th—12th graders)



Sunday, December 6, 6-8 p.m. – Youth supper, games and service project

Sunday, December 13, 7 p.m. – Zoom Youth Group Meeting

Monday, December 21 – 2-4 p.m. – Youth Scavenger Hunt at the Zoo

*All youth activities will be socially distanced and masked.



Will there be a Christmas Pageant this year?

How could we not have that wonderful tradition? It will look a little different though, as does everything else. Watch for a delightful telling of the Christmas Story by some familiar puppet friends as well as the children of St. Andrew's Lutheran Church. This video will be posted before Christmas.

Lenten Devotional

Once again this year we are asking the congregation to write devotions for our daily devotional booklet. This practice has proven to be one the congregation enjoys and those who choose to write have really enjoyed being a part of the process. The Holy Spirit stirs up faith in each of us when we choose to study the Word and respond. This year, Ash Wednesday is on February 17 so the devotional passages will be due on January 17. Please consider being a part of this even if you've never participated in the past. Please let Sandra Holland know if you are willing to write a devotional and she will assign you a verse.



It is a tradition at St. Andrew's to decorate the sanctuary with poinsettias on Christmas Eve. Even with all the changes we are currently managing because of the pandemic, we will continue this tradition, with a few changes. We will ask that poinsettias be left in the sanctuary through all the services Christmas Eve and Christmas Day. We will deliver poinsettias to our homebound members and others after that.

You may purchase these plants **in memory of** or **in honor of** loved ones and **to the glory of God**.

If paying by check, please make it out to St. Andrew's Lutheran Church. Please do not include it with your regular offering check. You may also give online on our website at salutheran.com; click "giving" at the top. Please email officemgr@salutheran.com with

dedication information if you give online. If you choose to fill in the form online, then save it and send it to officemgr@salutheran.com and write Poinsettia in the subject line.

Either pay online or send/drop off checks to the church.

The poinsettias cost \$11.50. You can include the form details in online giving. You can also place orders in the offering plate or turn in to the church office. Please write "poinsettia" in the memo section of your check.

DEADLINE FOR ORDERS IS DECEMBER 5th.

Your Name:

Phone:

Enclosed is \$ (\$11.50 each)

My dedication should read:

IN HONOR OF:

IN MEMORY OF:

TO THE GLORY OF GOD:

GIVEN BY:

Social Ministry Corner

by Beth Trump



The Welcome House (formerly the SAL parsonage) has been used by Lutheran Services of the Carolinas (LSC) for years as a transition home for refugees coming into the US. Unfortunately these programs are almost at a standstill so the home has not been inhabited much lately. Enter Family Promise (FP). With the cooperation of LSC, FP has been able to make the Welcome House available to a number of families who are experiencing homelessness. FP has also performed some much-needed improvements by giving it a deep clean, making repairs, and replacing much of the worn-out furniture. We are excited that the

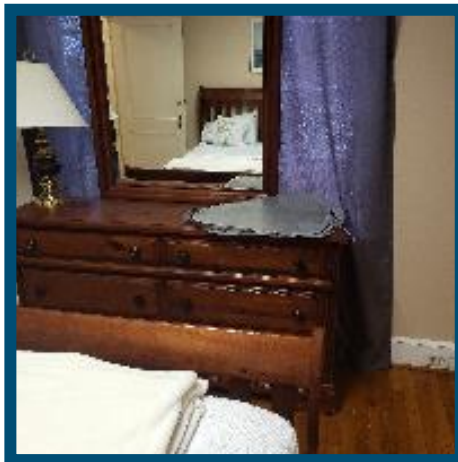
home is once again available to those in need, and your gifts help make that possible. Social Ministry, with your gifts, bought four turkeys and 15 boxes of dressing to supplement the Thanksgiving meals of folks in need in the St. Andrew's area.

Be on the lookout for an easy craft that anyone can do. We'll provide throws on Advent Day and the idea is to tie the edges together to make a warm two-layered blanket. We'll give them to local nursing homes and cancer treatment centers for folks who need a little extra snuggle. If you're not able to pick them up on Advent Day call Mari at the office to arrange a pick-up time.

This Christmas we'll partner with Family Promise to "adopt" some of their families. Be on the look-out for lists of things they need, or you can make a monetary donation. Be sure to note on your check to the church that it's for the Social Ministry Christmas Project.

Remember Kim and her seven children from the Congo? We're also going to provide them with gifts this Christmas. Lists will be posted in the Enews and elsewhere.

Thanks for all you do to make St. Andrew's a generous community.



Family Promise of the Midlands Christmas Wish List

This year for Christmas our church will be adopting three families from Family Promise. We are excited to continue our partnership with this great organization and hope you will participate in this giving opportunity. Below is a description of the families and a Christmas wish list for each family member. An online sign-up will be in the Enews. If you would prefer to call the church office to reserve a gift for a family member, please do. We will also accept monetary donations – make your payments to the SAL Pastor's Discretionary Fund: Christmas Project – or Walmart, Aldi or Food Lion gift cards. Drop off UNWRAPPED gifts, gift cards or donations by December 13. You can bring items by the church during office hours or call Beth Trump at 803-920-3547 or email btrump6659@gmail.com to make other arrangements. Thank you for your generosity during these difficult times.



Family One – the RL Family

Hardworking single mother with an energetic 3-year-old daughter. The 3-year-old enjoys playing with playdoh, drawing and dressing up. Mom tries to keep up with her daughter and enjoys relaxing when she can. Mom loves to try new recipes (even when her daughter doesn't like them) and anything colorful.

Clothing Size (tops and bottoms)

Mom – size 16 pants, 1 XL blouse, shoe size 11. Enjoys going to the movies, the spa, going out to eat.

Daughter (age 3) – size 4T blouse and pants, shoe size 11T. Enjoys playing games, going to the zoo, playing with toys.

Wants and Needs

Mom wants/needs: hoodies (2XL), flannel pajamas, underwear, socks, boots, house coat, slippers, gift cards, gas cards, help with car maintenance.

Daughter wants/needs: books, toys, stuffed animals, flannel pajamas, DVD's, karaoke machine, pretty backpack, tricycle.



Family Two – the SW Family

Single mother of two boys. She loves relaxing and being pampered. However, her two boys keep her on her toes. Her oldest loves football and hanging with friends. The youngest loves spending time with his mom and playing Fortnite with his older brother.

Clothing Size (tops and bottoms)

Mom – size 8/10 pants, medium shirt, shoe size 8. Enjoys going to the movies, the spa, going out to eat. Favorite color is purple.

Son (age 13) – size boys' 14/16, shoe size men's 7. Enjoys playing games, going to the zoo, playing with toys. Favorite color is green.

Son (age 6) – size boys' 6/7, shoe size children's 1. Enjoys playing games, going to the zoo, playing with toys. Favorite color is blue.

Wants and Needs

Mom wants/needs: Gift cards to get hair products, mani/pedi, steel toe work sneakers from Sports Academy, gifts cards to Walmart or Target, three clothes hampers with lids, a VISA or Master card to get the boys haircuts.

Son (13) wants/needs: underwear, socks, coat, hoodie, gloves, hat, books, pajamas.

Son (6) wants/needs: underwear, socks, coat, hoodie, gloves, hat, smart TV for small bedroom, books, pajamas.



Family Three – the DM Family

Single mother of four kids. The mom is a veteran who is extremely generous and puts others before herself. Her 15-year-old twins think with the same brain. They are both passionate and independent. Her shy 9-year-old loves the PlayStation and has been described as a 'sweetheart'. The 8-year-old is extremely outgoing and loves art.

Clothing Size (tops and bottoms)

Mom – size 8/10 pants, medium shirt, shoe size 8. Enjoys going to the movies, the spa, going out to eat. Favorite color is purple.

Daughter age (15) – size medium, shoe size 8. Enjoys drawing. Favorite color is black.

Daughter age (15) – size medium, shoe size 7.5. Favorite color is purple.

Son (age 9) – size boys' large 10/12, shoe size 2. Enjoys playing sports. Favorite color is red.

Son (age 8) – size boys' medium 8, shoe size 1. Enjoys playing with toys. Favorite color is red.

Wants and Needs

Mom wants/needs: gift cards, gas cards, family games, assistance with car maintenance.

Daughter (15) wants/needs: watch, jewelry, socks, underwear, hoodies, jackets, gloves.

Daughter (15) wants/needs: watch, jewelry, socks, underwear, hoodies, jackets, gloves.

Son (9) wants/needs: military watch, games, underwear, socks, hoodies, gloves, hat, jacket.

Son (8) wants/needs: military watch, games, underwear, socks, hoodies, gloves, hat, jacket.



Congratulations to Mary Lynn Fulmer upon the birth of her granddaughter, Lily Kate, on September 29th. Mary Lynn's daughter Elizabeth Glisson, her husband Bobby, and their children Adam and Lucy are excited about the new family member! Let's rejoice with Mary Lynn and her family!



Congratulations to Jessica Land and Ryan Olsen upon their marriage on November 6th.

Congratulations to Beth Hutchison and Bob Cox upon their marriage on November 21st.

Friends & Relatives

- ✝ Corbett Anderson, nephew of Amy Vickers and grandchild of Mike and Susan Beeler
- ✝ Maria Casey, mom of Joe Casey
- ✝ Stephen Finger, friend of Jan Bass
- ✝ Sandra Ouzts, sister of Debra Ouzts
- ✝ Keith Ray, brother of Hank Ray
- ✝ Sally Thompson, sister-in-law of Patsy South
- ✝ Janette Gardner, aunt of Vickie Barfield
- ✝ Phil Johnson, cousin of Vickie Barfield
- ✝ Mark Bogard, cousin of Theresa Henry
- ✝ Ernie Davis, friend of Lee Bowling
- ✝ Jimmy Asbill, son of Shirley Swanson
- ✝ Bonnie Seibert, cousin of Jada Mitchell
- ✝ Sharon Hixon, friend of Vern Free
- ✝ Edna Wheeler's mother, and granddaughter Emily Wheeler
- ✝ Jada Johnson, niece of Erin Johnson
- ✝ Mike Chase, cousin of Vicky Henderson



Homebound

- ✝ Sarah Cook
- ✝ Jackie Darby
- ✝ Pete Cox
- ✝ Linwood Swittenberg

Members in Extended Care

- ✝ Adrian Trexler, The Brian Center
- ✝ Madge Bartsch, Generations of Chapin
- ✝ Martha Ferguson, NHC Parklane
- ✝ Lois Fulmer, Lexington Extended Care
- ✝ Flo Onley, Generations in Irmo

Members with Prayer Concerns

- ✝ Allen Semones, cancer treatments
- ✝ Pat Dubose, recovering at her son's home in NC
- ✝ Jim Chapman, Palmetto Richland Hospital
- ✝ Evran Ray, recovering at home
- ✝ Mike Vickers, recovering at home
- ✝ Wayne Scott, Providence Hospital
- ✝ David Wilson, cancer treatments
- ✝ Flo Onley, Hospice Care



Chris Daly 12/1
Kimberly Von Schweinitz 12/1
Zach Bane 12/4
Kasarah Boiter 12/4
Sandra Ringer 12/5
George Schodowski 12/5
Amy Vickers 12/9
Mary Ann Jacobs 12/10
Ben Slice 12/11
Rylee Gates 12/12
Kristine Thompson 12/12
Joe Ray 12/14

Andrew Von Schweinitz 12/14
Dollie Lunsford 12/15
Emma Smith 12/16
Hannah Smith 12/17
Eric Young 12/17
Donna Birdsong 12/19
Maliyah Beckham 12/21
Chris Land 12/22
Barbara Galarneau 12/23
Susan Hentz 12/24
Pat Blackwell 12/26
Abigail Amodio 12/27
Ruth Lackstrom 12/28



December 2020



Sun	Mon	Tue	Wed	Thu	Fri	Sat
29 First Sunday of Advent 12:00 p.m. Advent Activities and	30 6:00 p.m. Yoga via Zoom	1 7:15 p.m. Pajama Time via Zoom	2 12 p.m. Advent Communion Worship 6:00 p.m. Zoom Bible Study w/	3	4	5
6 9:00 a.m. Adult Sunday School 10:30 a.m. Worship Outdoors 11:15 p.m. Congregational 6:00 p.m. Youth games and Service Project	7 6:00 p.m. Yoga via Zoom	8 7:15 p.m. Pajama Time Zoom	9 12 p.m. Advent Communion Worship 6:00 p.m. Zoom Bible Study w/ Pastor Trump	10	11	12
13 9:00 a.m. Sunday School for Preschool-2nd Graders 9:45 a.m. Sunday School for 3rd-6th Graders 9:45 a.m. Adult Sunday School 9:00 a.m.—11:15 a.m. Indoor Communion Service (reservations requested) 7:00 p.m. Youth Zoom	14 6:00 p.m. Yoga via Zoom	15 7:15 p.m. Pajama Time via Zoom	16 12 p.m. Advent Communion Worship 6:00 p.m. Zoom Bible Study w/ Pastor Trump	17 7:00 p.m. Council Meeting	18 7:00 p.m. Ladies' Book Club	19
20 9:00 a.m. Adult Sunday School 10:30 a.m. Worship Outdoors	21 6:00 p.m. Yoga via Zoom 2:00 p.m. Youth Zoo Scavenger Hunt	22 7:15 p.m. Pajama Time via Zoom	23 12 p.m. Advent Communion Worship	24 CHRISTMAS EVE 12:00 p.m. (indoors) Service of Holy Communion and Candlelighting 4:00 p.m. (outdoors) Service of Holy Communion and Candlelighting 6:00 p.m., 7:00 p.m., 8:00 p.m. (indoors) Services of Holy Communion and Candlelighting	25 CHISTMAS DAY 10:00 p.m. (indoors) Service of Holy Communion 11:00 pm. (indoors) Service of Holy Communion	26
27 Children and Adult Sunday School (refer to Dec. 13 schedule) 9:00 a.m.—11:15 a.m. Indoor Communion Service (reservations requested)	28 8:30 p.m. Yoga via Zoom	29 7:00 p.m. Yoda Rules	30	31		

Finance

--	--	--	--	--	--	--	--	--	--	--	--	--	--	--	--	--	--	--	--	--	--	--	--	--	--	--	--	--	--	--	--	--	--	--	--	--	--	--	--	--	--	--	--	--	--	--	--	--	--	--	--	--	--	--	--	--	--	--	--	--	--	--	--	--	--	--	--	--	--	--	--	--	--	--	--	--	--	--	--	--	--	--	--	--	--	--	--	--	--	--	--	--	--	--	--	--	--	--	--	--	--	--	--	--	--	--	--	--	--	--	--	--	--	--	--	--	--	--	--	--	--	--	--	--	--	--	--	--	--	--	--	--	--	--	--	--	--	--	--	--	--	--	--	--	--	--	--	--	--	--	--	--	--	--	--	--	--	--	--	--	--	--	--	--	--	--	--	--	--	--	--	--	--	--	--	--	--	--	--	--	--	--	--	--	--	--	--	--	--	--	--	--	--	--	--	--	--	--	--	--	--	--	--	--	--	--	--	--	--	--	--	--	--	--	--	--	--	--	--	--	--	--	--	--	--	--	--	--	--	--	--	--	--	--	--	--	--	--	--	--	--	--	--	--	--	--	--	--	--	--	--	--	--	--	--	--	--	--	--	--	--	--	--	--	--	--	--	--	--	--	--	--	--	--	--	--	--	--	--	--	--	--	--	--	--	--	--	--	--	--	--	--	--	--	--	--	--	--	--	--	--	--	--	--	--	--	--	--	--	--	--	--	--	--	--	--	--	--	--	--	--	--	--	--	--	--	--	--	--	--	--	--	--	--	--	--	--	--	--	--	--	--	--	--	--	--	--	--	--	--	--	--	--	--	--	--	--	--	--	--	--	--	--	--	--	--	--	--	--	--	--	--	--	--	--	--	--	--	--	--	--	--	--	--	--	--	--	--	--	--	--	--	--	--	--	--	--	--	--	--	--	--	--	--	--	--	--	--	--	--	--	--	--	--	--	--	--	--	--	--	--	--	--	--	--	--	--	--	--	--	--	--	--	--	--	--	--	--	--	--	--	--	--	--	--	--	--	--	--	--	--	--	--	--	--	--	--	--	--	--	--	--	--	--	--	--	--	--	--	--	--	--	--	--	--	--	--	--	--	--	--	--	--	--	--	--	--	--	--	--	--	--	--	--	--	--	--	--	--	--	--	--	--	--	--	--	--	--	--	--	--	--	--	--	--	--	--	--	--	--	--	--	--	--	--	--	--	--	--	--	--	--	--	--	--	--	--	--	--	--	--	--	--	--	--	--	--	--	--	--	--	--	--	--	--	--	--	--	--	--	--	--	--	--	--	--	--	--	--	--	--	--	--	--	--	--	--	--	--	--	--	--	--	--	--	--	--	--	--	--	--	--	--	--	--	--	--	--	--	--	--	--	--	--	--	--	--	--	--	--	--	--	--	--	--	--	--	--	--	--	--	--	--	--	--	--	--	--	--	--	--	--	--	--	--	--	--	--	--	--	--	--	--	--	--	--	--	--	--	--	--	--	--	--	--	--	--	--	--	--	--	--	--	--	--	--	--	--	--	--	--	--	--	--	--	--	--	--	--	--	--	--	--	--	--	--	--	--	--	--	--	--	--	--	--	--	--	--	--	--	--	--	--	--	--	--	--	--	--	--	--	--	--	--	--	--	--	--	--	--	--	--	--	--	--	--	--	--	--	--	--	--	--	--	--	--	--	--	--	--	--	--	--	--	--	--	--	--	--	--	--	--	--	--	--	--	--	--	--	--	--	--	--	--	--	--	--	--	--	--	--	--	--	--	--	--	--	--	--	--	--	--	--	--	--	--	--	--	--	--	--	--	--	--	--	--	--	--	--	--	--	--	--	--	--	--	--	--	--	--	--	--	--	--	--	--	--	--	--	--	--	--	--	--	--	--	--	--	--	--	--	--	--	--	--	--	--	--	--	--	--	--	--	--	--	--	--	--	--	--	--	--	--	--	--	--	--	--	--	--	--	--	--	--	--	--	--	--	--	--	--	--	--	--	--	--	--	--	--	--	--	--	--	--	--	--	--	--	--	--	--	--	--	--	--	--	--	--	--	--	--	--	--	--	--	--	--	--	--	--	--	--	--	--	--	--	--	--	--	--	--	--	--	--	--	--	--	--	--	--	--	--	--	--	--	--	--	--	--	--	--	--	--	--	--	--	--	--	--	--	--	--	--	--	--	--	--	--	--	--	--	--	--	--	--	--	--	--	--	--	--	--	--	--	--	--	--	--	--	--	--	--	--	--	--	--	--	--	--	--	--	--	--	--	--	--	--	--	--	--	--	--	--	--	--	--	--	--	--	--	--	--	--	--	--	--	--	--	--	--	--	--	--	--	--	--	--	--	--	--	--	--	--	--	--	--	--	--	--	--	--	--	--	--	--	--	--	--	--	--	--	--	--	--	--	--	--	--	--	--	--	--	--	--	--	--	--	--	--	--	--	--	--	--	--	--	--	--	--	--	--	--	--	--	--	--	--	--	--	--	--	--	--	--	--	--	--	--	--	--	--	--	--	--	--	--	--	--	--	--	--	--	--	--	--	--	--	--	--	--	--	--	--	--	--	--	--	--	--	--	--	--	--	--	--	--	--	--	--	--	--	--	--	--	--	--	--	--	--	--	--	--	--	--	--	--	--	--	--	--	--	--	--	--	--	--	--	--	--	--	--	--	--	--	--	--	--	--	--	--	--	--	--	--	--	--	--	--	--	--	--	--	--	--	--	--	--	--	--	--	--	--	--	--	--	--	--	--	--	--	--	--	--	--	--	--	--	--	--	--	--	--	--	--	--	--	--	--	--	--	--	--	--	--	--	--	--	--	--	--	--	--	--	--	--	--	--	--	--	--	--	--	--	--	--	--	--	--	--	--	--	--	--	--	--	--	--	--	--	--	--	--	--	--	--	--	--	--	--	--	--	--	--	--	--	--	--	--	--	--	--	--	--	--	--	--	--	--	--	--	--	--	--	--	--	--	--	--	--	--	--	--	--	--	--	--	--	--	--	--	--	--	--	--	--	--	--	--	--	--	--	--	--	--	--	--	--	--	--	--	--	--	--	--	--	--	--	--	--	--	--	--	--	--	--	--	--	--	--	--	--	--	--	--	--	--	--	--	--	--	--	--	--	--	--	--	--	--	--	--	--	--	--	--	--	--	--	--	--	--	--	--	--	--	--	--	--	--	--	--	--	--	--	--	--	--	--	--	--	--	--	--	--	--	--	--	--	--	--	--	--	--	--	--	--	--	--	--	--	--	--	--	--	--	--	--	--	--	--	--	--	--	--	--	--	--	--	--	--	--	--	--	--	--	--	--	--	--	--	--	--	--	--	--	--	--	--	--	--	--	--	--	--	--	--	--	--	--	--	--	--	--	--	--	--	--	--	--	--	--	--	--	--	--	--	--	--	--	--	--	--	--	--	--	--	--	--	--	--	--	--	--	--	--	--	--	--	--	--	--	--	--	--	--	--	--	--	--	--	--	--	--	--	--	--	--	--	--	--	--	--	--	--	--	--	--	--	--	--	--	--	--	--	--	--	--	--	--	--	--	--	--	--	--	--	--	--	--	--	--	--	--	--	--	--	--	--	--	--	--	--	--	--	--	--	--	--	--	--	--	--	--	--	--	--	--	--	--	--	--	--	--	--	--	--	--	--	--	--	--	--	--	--	--	--	--	--	--	--	--	--	--	--	--	--	--	--	--	--	--	--	--	--	--	--	--	--	--	--	--	--	--	--	--	--	--	--

Offering Envelopes

If you give your offering to St. Andrew's regularly by using the online access and are still receiving offering envelopes, please let us know if you'd like to save the church some money by canceling your envelopes. Please contact the church office with this request.

Advent Day Family Fun



We sign contracts expecting that we can afford
PHONES! CARS! HOMES! CABLE TV!



What's wrong with signing a simple "Statement of Intent Card" for your church? The difference is your church will never ever stop your service or be taken away!

Thank you to all who did return a card for 2021. We have had about 60 returns and they have stated their intention to give about \$47,000 more in 2021 than in 2020.

If you have not returned a "Statement of Intent" please take the time to do so or send a confidential email to sberger@salutheran.com.

35%

That's the percentage of yearly giving that the average American gives during the month of December. This applies to churches as well as other charities. Maybe this is where you fall as well.

Please know that any end of the year gift to your church will do many things including ensuring that we meet our expenses for this year. If we end the year with a surplus your gifts would go toward:

- Paying for the HVAC system in total.
- Ensuring that we begin the year with surplus that will help us until we Covid is under control.
- Replenishing the savings that we will present to be used for the narthex/parlor project.

You may give to Current and Benevolence for all of these or you may give to any special fund, such as the Narthex Fund, Worship furnishings, Memorials, Debt Retirement, or others.

St. Andrew's Lutheran Church
1416 Broad River Rd.
Columbia, SC 29210

RETURN SERVICE REQUESTED

To Reach Us
Telephone: 803-772-6034
Email: officemgr@salutheran.com
Website: www.salutheran.com

Pastor

The Rev. John P. Trump

Deacon

Sandra Holland

Director of Music Ministries

Jenny Walrath

Choir Director

Nicholas Todd Shumate

Office Administrator

Mari Frye

Congregational Council

President: Curtis Amick
Vice President: Jay Folk
Secretary: Deborah Slice
Treasurer: Judy Venturella
Asst. Treasurer: Jason Godfrey
Financial Secretary: Sharon Berger
Tom Bane
Erin Johnson
Phillip Jenkins
Georgia Godfrey
Beth Mullins
Paul Osmundson
Whanna Bouknight
Tom Henry